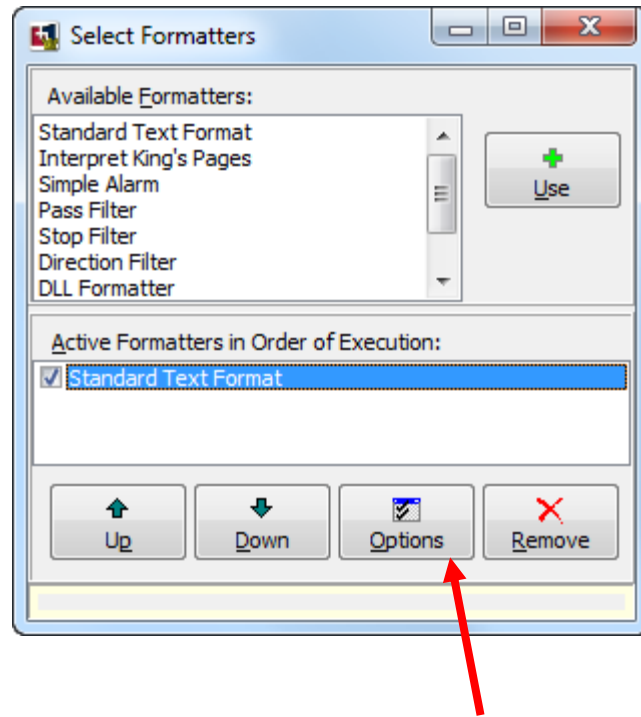
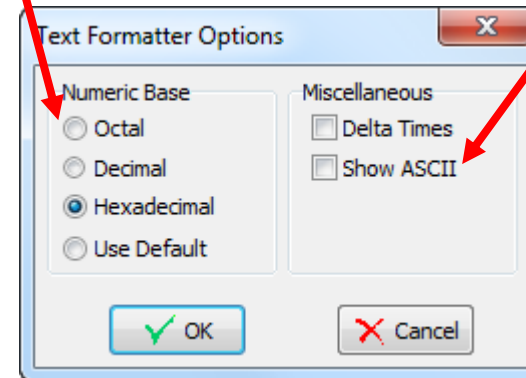


# Select Formats

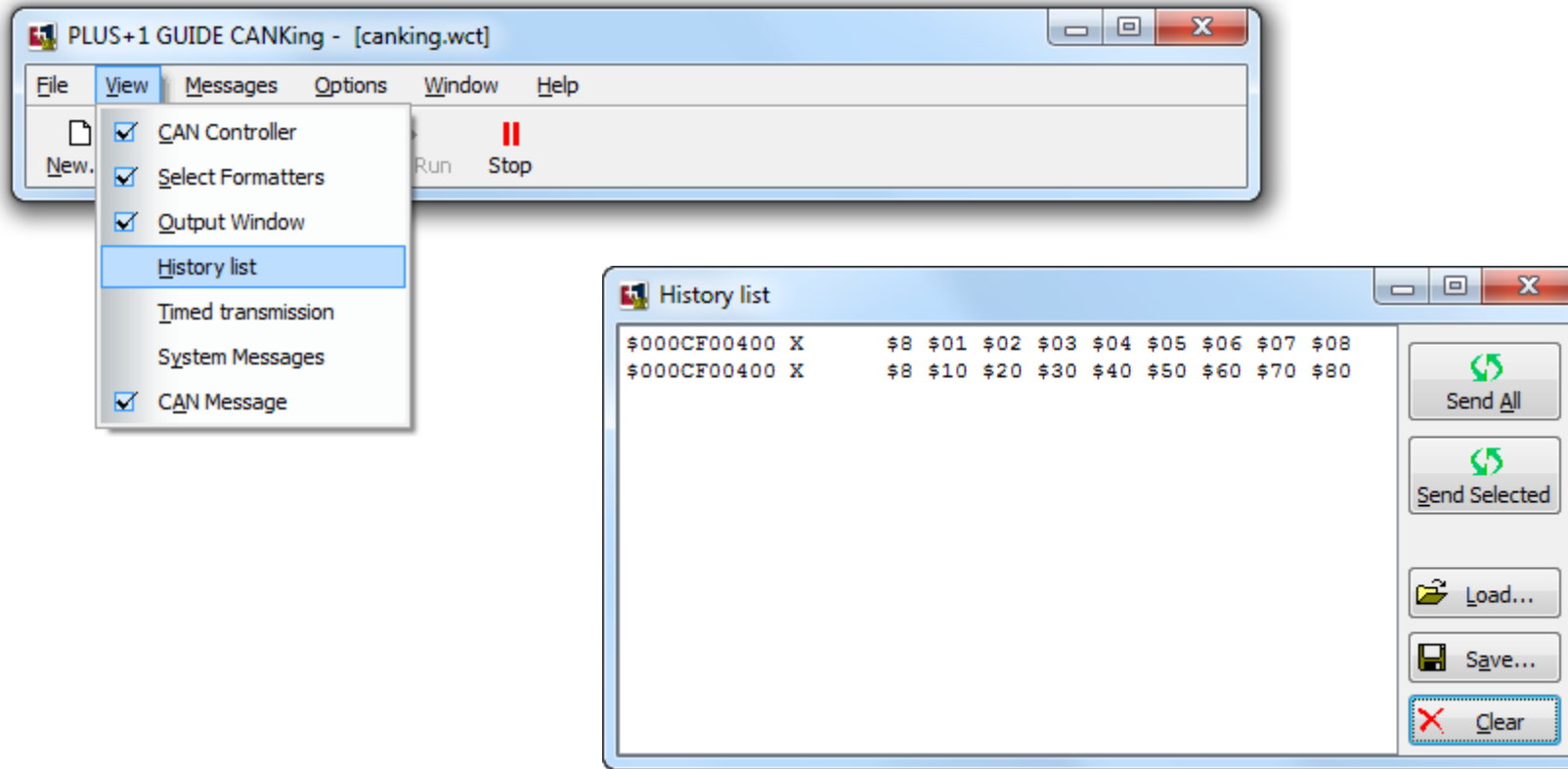


Output Window  
format

Converts bytes  
to characters

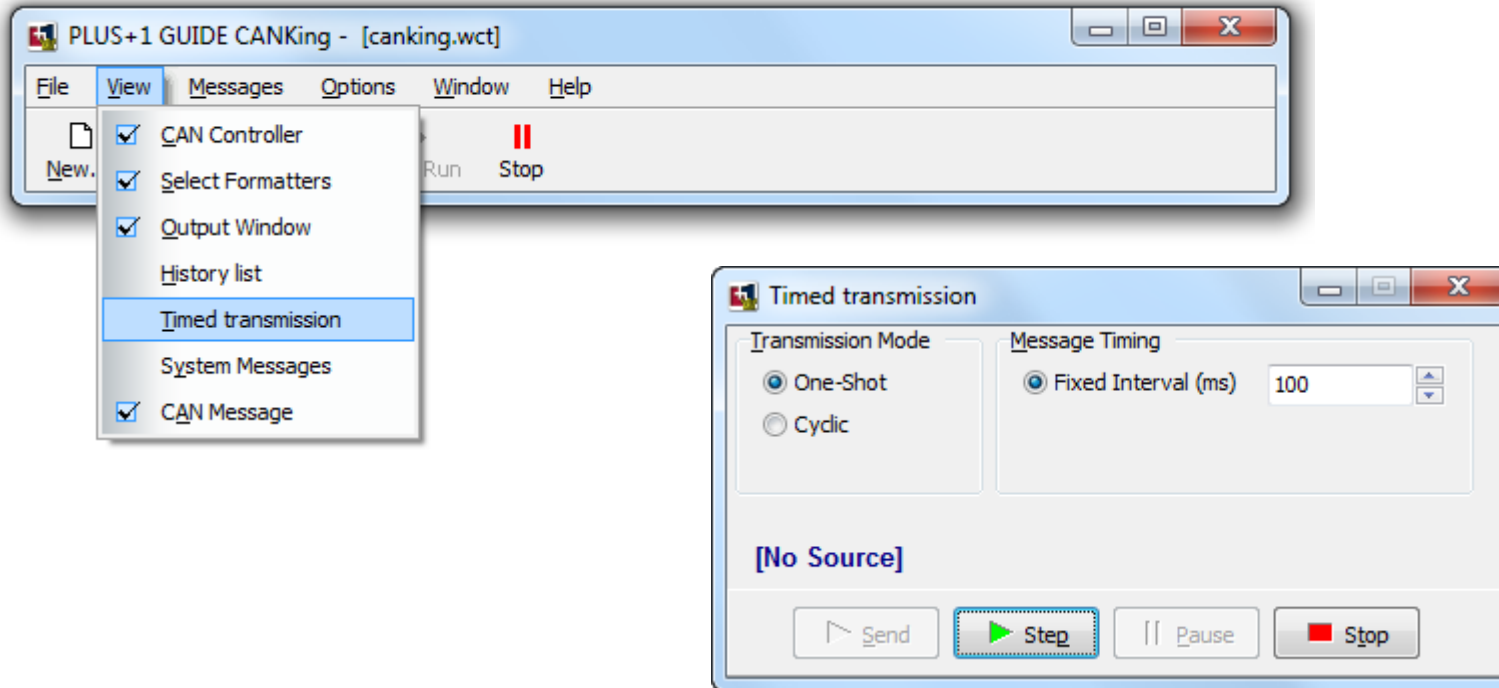


# History List Of Sent Messages



# Timed Transmission

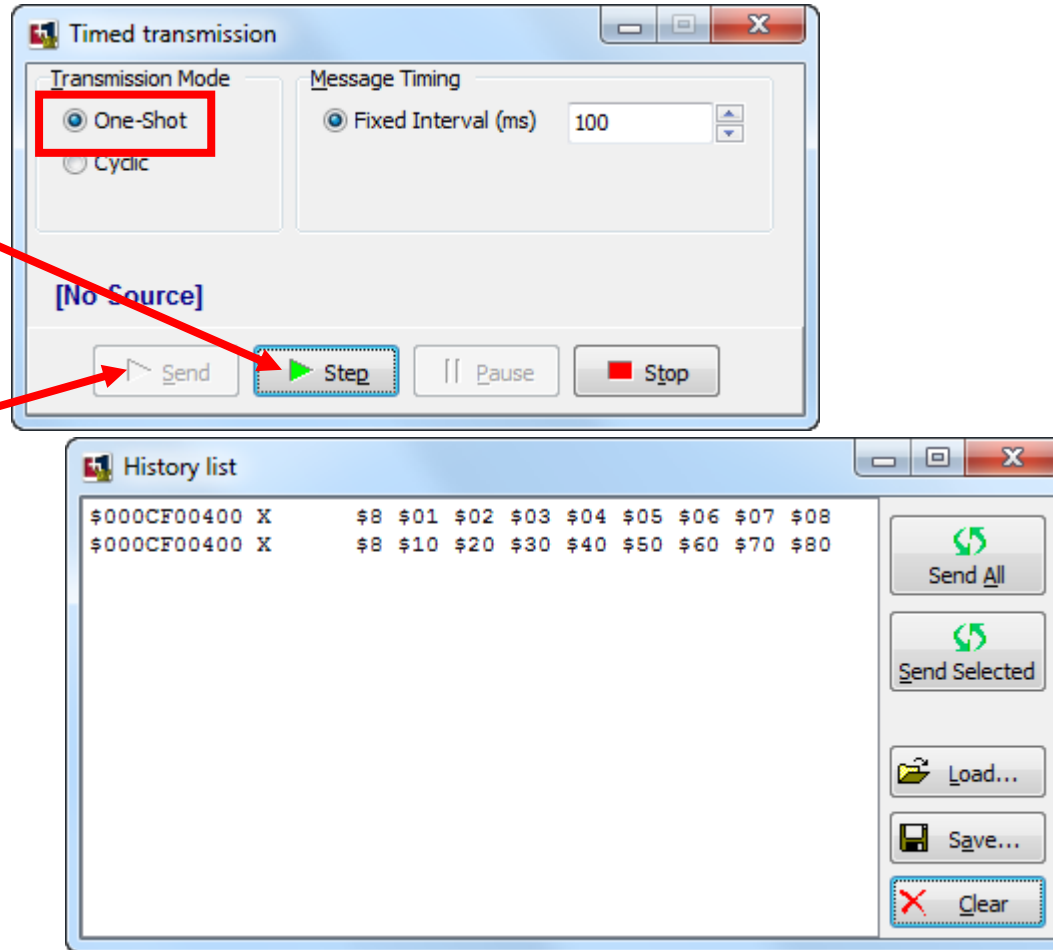
- This will transmit messages from history list



# One-Shot Messages

The message in turn of the selected messages in the History list is sent.

Sends the selected messages in the History list with the Timing interval. It's done once



# Cyclic Messages

Same function as  
One-Shot

Sends the selected  
messages in the  
History list with the  
Timing interval.  
Repeated until Stop is  
clicked

